

aeroTAP stereo vision 3D camera

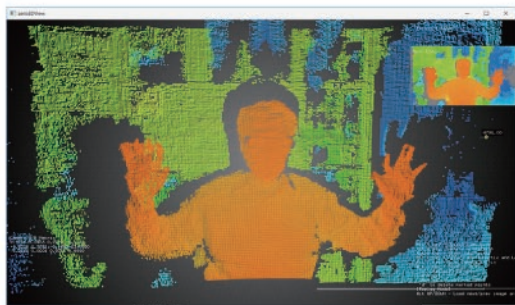
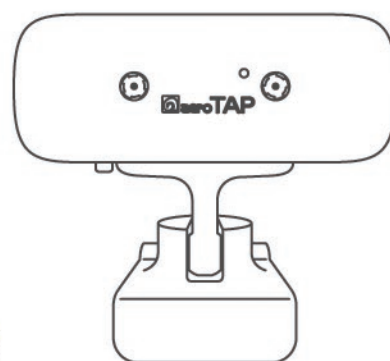
- Sensor for mobility robots and ADAS
- Interface of VR/MR contents
- Realtime reconstruction and analysis of 3D images
- 3D digital contents
- Interactive digital contents
- Surveillance camera, people counting
- AI, deep learning
- Games



3D sensor using stereo vision will process depth calculation and mapping of color/depth images within the built-in IC chip. This minimizes the CPU consumption and makes constitution simple. It can be connected using USB 2.0/3.0 bus power. Multiple sensors can be connected simultaneously.

Available middleware

- aeroTAP touchless interface (Windows)
- OpenNI2 driver (Windows, Linux)
- aeroTAP SDK (Windows, Linux)
- NuiTrack Skelton Tracking (Windows, Linux)



*NuiTrack is a product of 3DiVi Inc. A kit developed for aeroTAP is available.
*Please purchase a license for NuiTrack



For developing new products in new fields such as touchless interface, self-driving, personal mobility, robot, AI, IoT, VR/MR, smart device development.

	aeroTAP 3D G2	aeroTAP 3D	aeroTAP 3D GS
			
baseline	3cm	3cm	6cm
distance range	20cm ~ 300cm	25cm ~ 250cm	25cm ~ 400cm
depth image	320×240, 640×480, 640×360, 1280×720	320×240, 640×480, 1280×720	640×480, 1280×480, 1280×720, 2560×720
color image	320×240, 640×240, 640×480, 640×360, 1280×480, 1280×720, 2560×720	320×240, 640×240, 640×480, 1280×480	640×480, 1280×480, 1280×720, 2560×720
FOV	40DEG@VGA, 60@HD/WVGA	40DEG@VGA, 60@WVGA	80DEG@VGA, 100@HD
image sensor	OV9714 1296×812 1/4inch	SOI H22 1280×800 1/4inch	ONSEMI AR0135 1/3inch
Type of shutter	rolling shutter	rolling shutter	global shutter
Type of lens	Type A with IR cut filter Type B with dual band IR cut filter	Type A with IR cut filter Type B without IR cut filter	Type B with dual band IR cut filter
UVC1.1 compatibility	compatible	compatible	compatible
Supporting OS	Windows/Linux	Windows/Linux	Windows/Linux
Power source	USB Bus Power (5V/500mA,5V/600mA)	USB Bus Power (5V/500mA,5V/600mA)	USB Bus Power (5V/500mA,5V/800mA)
Interface	USB2.0/3.0 MicroB Female	USB2.0/3.0 MicroB Female	USB2.0/3.0 MicroB Female
GPIO	Output 5V	N/A	Output 5V

aeroTAP DOE Projector

- Laser wave : 830nm
- DOE Lens output power : 150 mW
- Amp. : 330mA (default: 130mA)
- Range : 35 to 100cm
- Zero Order (#35cm, 70mW Visual) : <0.28 mW
- Random Dots : 30K, Aspect: 4:3
- FOV (Diagonal) : 80°
- Power Source : USB 2.0 (Connector not included)
or aeroTAP 3D USB GS Camera GPIO



<<Contact Information>>

nextEDGE Technology K.K.
Tsukuba City, Ibaraki Japan
<http://www.nextEDGETech.com>

aeroTAP is registered trademark.
Touchless interface is registered trademark.