

aeroTAP evo Quick setup Guide

Last Updated 2023 Nov. 11

Thank you for using aeroTAP evo. Please read these instructions carefully before using this product.

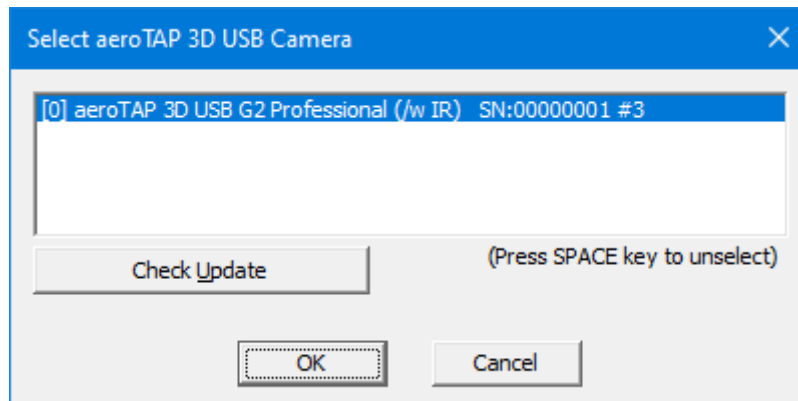
DOWNLOAD and SETUP

1. Download the latest version aeroTAP evo from below web site, and run installer.

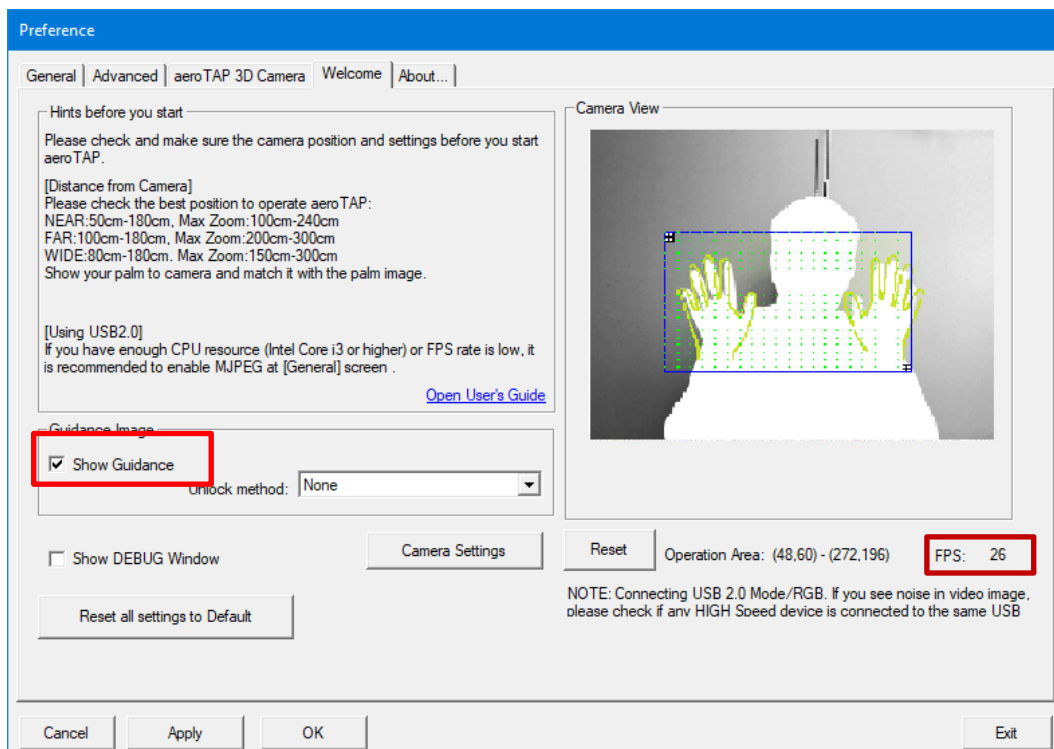
<https://www.aerotap.com/en/start.html>

2. Connect camera to PC and run aeroTAP evo.

- Connect aeroTAP 3D USB camera to PC and click "AeroTAP evo7" icon on desktop.

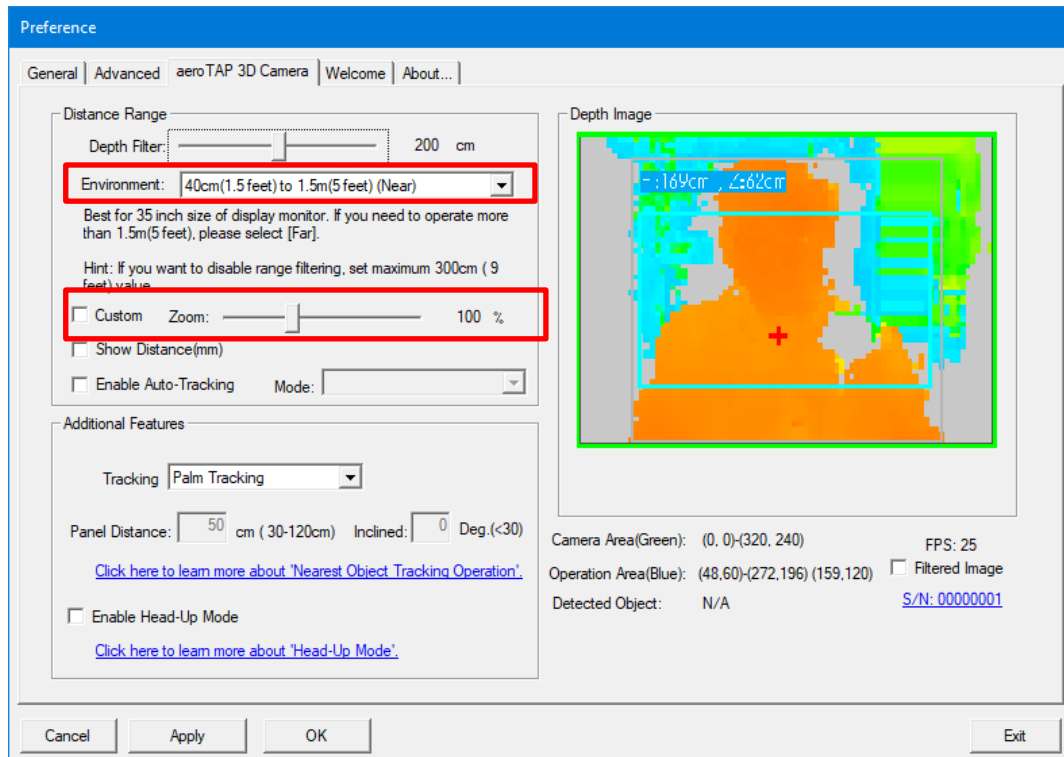


- Click "OK"



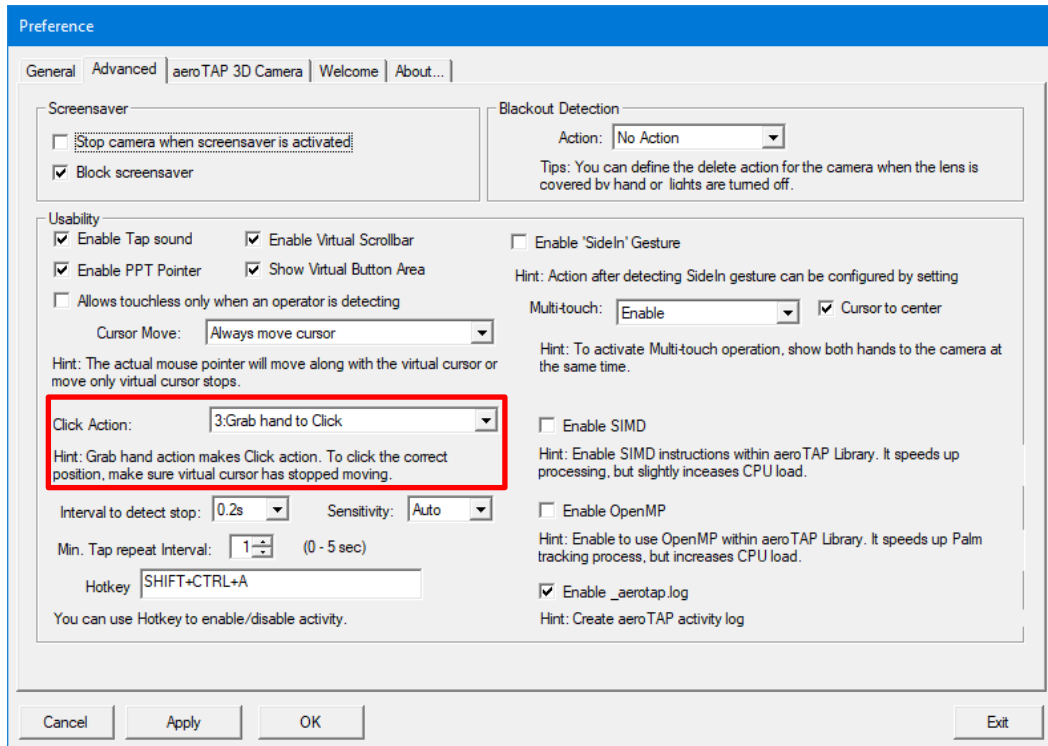
- Check camera view and direction. Uncheck “Show Guidance”
- Check FPS rate. If it is lower than 20, you should check USB cable and connection.
If your system is enough CPU power , you better to choose FPS 30 (High) at “General” Tab.

3. Go to [aeroTAP 3D Camera] Tab and check came



- [Environment] Default is ‘Near’ (40cm to 1.5m)
- You should change it to ‘Far’ if your screen is large and needs distance to operate.
- Also you can change [Zoom] value to adjust to your appropriate distance.

4. Go to [Advanced] Tab and set Click action



- You should consider which action is suitable for the content for 'Click' action.
For example. **"Grab hand to Click"** is good if the operator is familiar with how aeroTAP works.
"Stop to Click" is better if the operator is public user who don't know how it works

5. [OK] to start aeroTAP evo.

CHECK DISTANCE

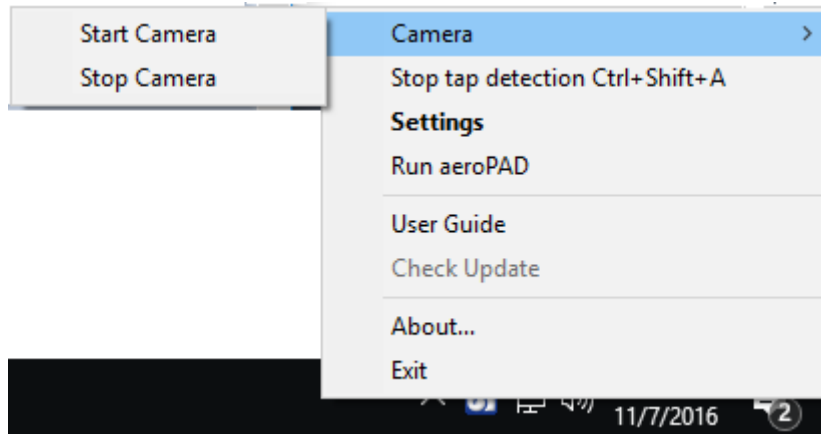
Due to detect palm by aeroTAP evo, operator should be placed in appropriate distance position from the camera. After run aeroTAP evo, camera view shows on center top of Windows.



- Size of [Palm] image on view and your hand should be the same (That is the best position).
- If it is more Far or Near, then back to setting and adjust [Zoom] value.

To back to aeroTAP evo Setting Dialog, you can press [Ctrl]+[Shift]+'c' key.

Or choose "Settings" from Task menu's aeroTAP icon.



TERMINATE or STOP aeroTAP evo

To terminate aeroTAP evo, open "Setting Dialog" and click [Exit] button, or select "Exit" from system menu.

If you just want to inactivate aeroTAP touchless, Press Ctrl+Shift+'a'. And press Ctrl+Shift+'a' to re-activate touchless feature.

MORE TIPS

You can find out more detail information from here:

<https://www.aerotap.com/Help/>

ASSISTANCE FEATURES

aeroTAP evo can provides variety of assistant fetures which enables operator navigate any Windows application just by a palm.

PALM GESTURE

To enabling Drag and Drop like operation, you can setup PalmGesture as the following.

1. Copy the attached INIs to C:¥ProgramData¥aeroTAP folder.
Then run aeroTAP evo gain, or show Setting Dialog then [OK] to start.

PalmGesture.ini

```
[Chrome.exe]  
40,39,0,0,2
```

FOR FURTHER SUPPORT

Please contact us via www.aerotap.com support page.

Copyright 2023 nextEDGE Technology All right reserved.